

SIGNATURE

NORTH EAST

OFFICIALLY RATED THE NO.1 ESTATE AGENT IN THE NORTH EAST





Priors Terrace, Tynemouth NE30 4BE

Priors Terrace Tynemouth NE30 4BE

Offers Over £500,000

Signature North East is proud to welcome this stunning three-bedroom maisonette to the sales market on the ever-popular Priors Terrace, Tynemouth. With stunning views to the Priory and Mouth of the Tyne to the front and along the river to the rear. This property has been lovingly restored by the current owners to a very high standard, with modern and period features throughout, creating a perfect home in the heart of Tynemouth village.

A secure entry system and staircase lead into the apartment. Once inside, the spacious hallway offers access to the principal rooms of the property, with the well-proportioned living room to the front, taking in full advantage of the views from three large windows, one of which opens out to a balcony. This room has a wealth of original features with the cornice, ceiling roses and feature fireplace with marble surround. There is also access to the home office/bedroom four from here. The dining kitchen has a range of floor and wall units from Fired Earth and space for a large fridge freezer, with substantial space for dining, making this a very sociable space. There is then access to the rear balcony and fire escape with views along the river. The main family bathroom is modern yet classically designed with a free-standing bath and double walk-in shower unit.

Up to the top floor, there is the master bedroom to the front which benefits from fitted wardrobes and an en-suite shower room. There are an additional two double bedrooms and a large storage cupboard on this floor.

Externally, this property boasts a communal garden with a separate garage to the rear for parking. The property is also within walking distance of Tynemouth Village, Priory Castle and the award-winning North East beaches.

Contact Signature North East today for a viewing on 0191 2513344.



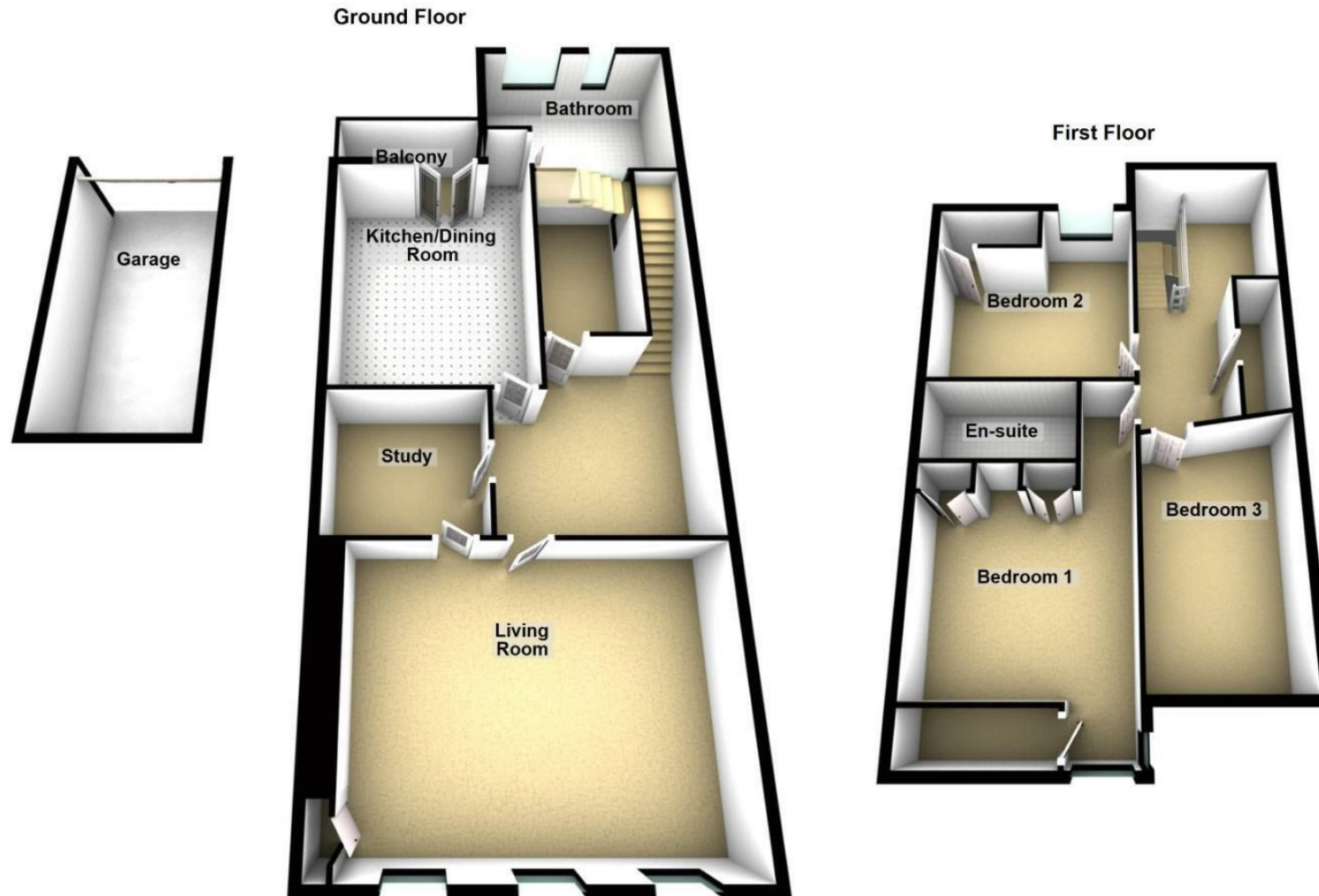


Why Signature?

Signature North East reach 150,000 per month on social media. We cover 19 locations in the North East. At signature we keep our doors open from 8AM - 8PM, when other estate agents are closed. We are a customer 5 star rated agent on allagents.co.uk. With a dedicated group of negotiators across the region, to the 'behind the scenes' Head Office team, each member of staff is passionate about the industry and cares about every client; you're at the heart of everything we do!

PLEASE NOTE THAT THE VENDOR HAS CERTIFIED THE PROPERTY INFORMATION AND IMAGES.

PROPERTY FLOORPLAN



Please be advised the floorplans are not drawn to scale and are to be used to give an idea of the layout of the property.
Plan produced using PlanUp.

EPC RATING: E



More 5 Star Customer Reviews than any other Agent based in the North East on allAgents.co.uk



SALES

LETTINGS

FINANCE

LAW

WE COVER THE WHOLE OF THE NORTH EAST

Whitley Bay
0191 251 3344

Cramlington
01670 897 213

Tynemouth
0191 296 6689

Morpeth
01670 513 966

Ponteland
01661 820 082

Wallsend
0191 432 4151

Alnwick
01665 511 800

Heaton
0191 432 4275

Forest Hall
0191 266 9966

Other locations
0191 640 3523

Newcastle
0191 640 2284

Durham
0191 303 8252

Gosforth
0191 640 3523

Sunderland
0191 543 6390

Whickham
0191 432 5102

Gateshead
0191 432 4294

Jesmond
0191 281 1037

Killingworth
0191 640 3602

Ryton
0191 413 9845

Head Office &
Lettings
0191 253 4815

*Highest recommended 5-star reviews than any other Estate Agent based in the North East on allAgents.co.uk - The UK's Largest Customer Review Website for the Property Industry & Awarded Best Estate Agency 2018 & 2019 - North East England by SME News